

**Product Name: Galectin-3(8D7)Mouse Monoclonal Antibody**  
**Catalog #: AMM11273**



---

## Summary

<b>Production Name</b>	Galectin-3(8D7)Mouse Monoclonal Antibody
<b>Description</b>	Mouse Monoclonal Antibody
<b>Host</b>	Mouse
<b>Application</b>	WB,IHC,
<b>Reactivity</b>	Human,Mouse

## Performance

<b>Conjugation</b>	Unconjugated
<b>Modification</b>	Unmodified
<b>Isotype</b>	IgG
<b>Clonality</b>	Monoclonal
<b>Form</b>	Liquid
<b>Storage</b>	Store at 4°C short term. Aliquot and store at -20°C long term. Avoid freeze/thaw cycles.
<b>Buffer</b>	Liquid in PBS containing 50% glycerol, 0.5% BSA and 0.02% New type preservative N.
<b>Purification</b>	Affinity purification

## Immunogen

<b>Gene Name</b>	LGALS3 LGALS3; MAC2; Galectin-3; Gal-3; 35 kDa lectin; Carbohydrate-binding protein 35; CBP
<b>Alternative Names</b>	35; Galactose-specific lectin 3; Galactoside-binding protein; GALBP; IgE-binding protein; L-31; Laminin-binding protein; Lectin L-29; Mac-2 antigen
<b>Gene ID</b>	3958.0
<b>SwissProt ID</b>	P17931.Protein

## Application

<b>Dilution Ratio</b>	WB 1:2000-5000, IHC 1:100-200.
<b>Molecular Weight</b>	26kD

**Product Name: Galectin-3(8D7)Mouse Monoclonal Antibody**  
**Catalog #: AMM11273**

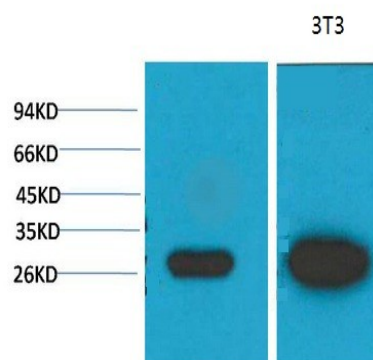


## Background

This gene encodes a member of the galectin family of carbohydrate binding proteins. Members of this protein family have an affinity for beta-galactosides. The encoded protein is characterized by an N-terminal proline-rich tandem repeat domain and a single C-terminal carbohydrate recognition domain. This protein can self-associate through the N-terminal domain allowing it to bind to multivalent saccharide ligands. This protein localizes to the extracellular matrix, the cytoplasm and the nucleus. This protein plays a role in numerous cellular functions including apoptosis, innate immunity, cell adhesion and T-cell regulation. The protein exhibits antimicrobial activity against bacteria and fungi. Alternate splicing results in multiple transcript variants.[provided by RefSeq, Oct 2014],function:Galactose-specific lectin which binds IgE. May mediate with the alpha-3, beta-1 integrin the stimulation by CSPG4 of endothelial cells migration. Together with DMBT1, required for terminal differentiation of columnar epithelial cells during early embryogenesis.,online information:Galectin-3,similarity:Contains 1 galectin domain.,subcellular location:Cytoplasmic in adenomas and carcinomas. May be secreted by a non-classical secretory pathway and associate with the cell surface.,subunit:Probably forms homo- or heterodimers. Interacts with DMBT1 (By similarity). Forms a complex with the ITGA3, ITGB1 and CSPG4. Interacts with LGALS3BP, LYPD3, CYHR1 and UACA.,tissue specificity:A major expression is found in the colonic epithelium. It is also abundant in the activated macrophages,

## Research Area

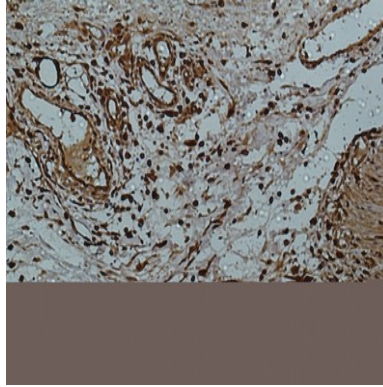
## Image Data



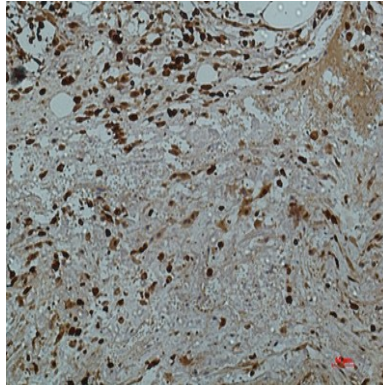
Western blot analysis of 1) MCF7, 2) 3T3 with Galectin-3 Mouse mAb diluted at 1:2,000.

**Product Name: Galectin-3(8D7)Mouse Monoclonal Antibody**  
**Catalog #: AMM11273**

---



Immunohistochemical analysis of paraffin-embedded human-colon using antibody diluted at 1:50.



Immunohistochemical analysis of paraffin-embedded human-colon2 using antibody diluted at 1:50.

**Note**

For research use only.