

Product Name: Claudin-2 Mouse Monoclonal Antibody(8H11)
Catalog #: AMM08905

Summary

Production Name	Claudin-2 Mouse Monoclonal Antibody(8H11)
Description	Mouse Monoclonal Antibody
Host	Mouse
Application	IHC,ELISA
Reactivity	Human,Mouse,Rat

Performance

Conjugation	Unconjugated
Modification	Unmodified
Isotype	IgG
Clonality	Monoclonal
Form	Liquid
Storage	Store at 4°C short term. Aliquot and store at -20°C long term. Avoid freeze/thaw cycles.
Buffer	Liquid in PBS containing 50% glycerol, 0.5% BSA and 0.02% New type preservative N.
Purification	Affinity purification

Immunogen

Gene Name	CLDN2 PSEC0059 SP82 UNQ705/PRO1356
Alternative Names	Claudin-2 (SP82)
Gene ID	9075.0
SwissProt ID	P57739.Synthesized peptide derived from human Claudin-2

Application

Dilution Ratio	IHC 1:100-1:300
Molecular Weight	25kD

Background

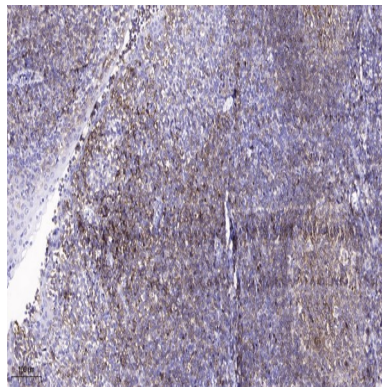
This gene product belongs to the claudin protein family whose members have been identified as major integral membrane

Product Name: Claudin-2 Mouse Monoclonal Antibody(8H11)
Catalog #: AMM08905

proteins localized exclusively at tight junctions. Claudins are expressed in an organ-specific manner and regulate tissue-specific physiologic properties of tight junctions. This protein is expressed in the intestine. Alternatively spliced transcript variants with different 5' untranslated region have been found for this gene.[provided by RefSeq, Jan 2010],function:Plays a major role in tight junction-specific obliteration of the intercellular space, through calcium-independent cell-adhesion activity.,similarity:Belongs to the claudin family.,subunit:Can form homo- and heteropolymers with other CLDN. Homopolymers interact with CLDN3, but not CLDN1, homopolymers. Directly interacts with TJP1/ZO-1, TJP2/ZO-2 and TJP3/ZO-3.,

Research Area

Image Data



Immunohistochemical analysis of paraffin-embedded human tonsil. 1, Antibody was diluted at 1:200 (4° overnight) . 2, Tris-EDTA,pH9.0 was used for antigen retrieval. 3,Secondary antibody was diluted at 1:200 (room temperature, 45min) .

Note

For research use only.