

**Product Name: Bovine Serum Albumin Mouse
Monoclonal Antibody(Mix-mA)
Catalog #: AMM07633**

Summary

Production Name	Bovine Serum Albumin Mouse Monoclonal Antibody(Mix-mA)
Description	Mouse Monoclonal Antibody
Host	Mouse
Application	WB,ELISA
Reactivity	Cow

Performance

Conjugation	Unconjugated
Modification	Unmodified
Isotype	IgG
Clonality	Monoclonal
Form	Liquid
Storage	Store at 4°C short term. Aliquot and store at -20°C long term. Avoid freeze/thaw cycles.
Buffer	PBS, pH 7.4, containing 0.02% New type preservative N as Preservative and 50% Glycerol.
Purification	Affinity purification

Immunogen

Gene Name	
Alternative Names	
Gene ID	
SwissProt ID	.Purified Protein

Application

Dilution Ratio	WB 1:1000-2000
Molecular Weight	66kD

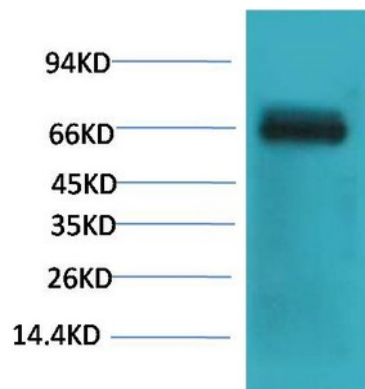
Background

**Product Name: Bovine Serum Albumin Mouse
Monoclonal Antibody(Mix-mA)
Catalog #: AMM07633**

Albumin is the most abundant protein in the circulatory system. In mammals albumin is synthesized initially as preproalbumin by the liver. After removal of the signal peptide, the resultant proalbumin is further processed by removal of the six-residue propeptide from the new N-terminus. The albumin released into circulation possesses a half-life of 19 days.

Research Area

Image Data



Western blot analysis of Bovine Serum Albumin using Bovine Serum Albumin Monoclonal Antibody.

Note

For research use only.