

**Product Name: Phospho-Stat3(Y705)(1E9)Mouse
Monoclonal Antibody
Catalog #: AMM06022**

Summary

Production Name	Phospho-Stat3(Y705)(1E9)Mouse Monoclonal Antibody
Description	Mouse Monoclonal Antibody
Host	Mouse
Application	WB,ELISA
Reactivity	Human,Rat,Mouse

Performance

Conjugation	Unconjugated
Modification	Phospho Antibody
Isotype	IgG
Clonality	Monoclonal
Form	Liquid
Storage	Store at 4°C short term. Aliquot and store at -20°C long term. Avoid freeze/thaw cycles.
Buffer	Liquid in PBS containing 50% glycerol, 0.5% BSA and 0.02% New type preservative N.
Purification	Affinity purification

Immunogen

Gene Name	STAT3
Alternative Names	STAT3
Gene ID	6774.0
SwissProt ID	P40763.Synthetic Peptide of Phospho-Stat3 (Y705) at AA range of 640-720

Application

Dilution Ratio	IHC 1:50-300
Molecular Weight	79,86kD

Background

The protein encoded by this gene is a member of the STAT protein family. In response to cytokines and growth factors,

**Product Name: Phospho-Stat3(Y705)(1E9)Mouse
Monoclonal Antibody
Catalog #: AMM06022**

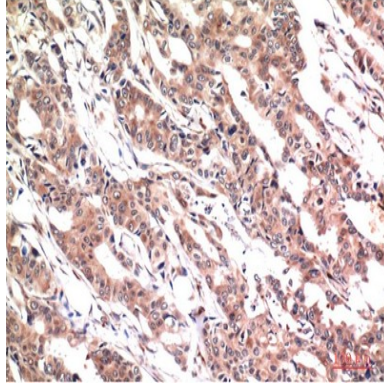
STAT family members are phosphorylated by the receptor associated kinases, and then form homo- or heterodimers that translocate to the cell nucleus where they act as transcription activators. This protein is activated through phosphorylation in response to various cytokines and growth factors including IFNs, EGF, IL5, IL6, HGF, LIF and BMP2. This protein mediates the expression of a variety of genes in response to cell stimuli, and thus plays a key role in many cellular processes such as cell growth and apoptosis. The small GTPase Rac1 has been shown to bind and regulate the activity of this protein. PIAS3 protein is a specific inhibitor of this protein. Mutations in this gene are associated with infantile-onset multisystem autoimmune disease and hyperdisease: Defects in STAT3 are the cause of hyperimmunoglobulin E recurrent infection syndrome autosomal dominant (AD-HIES) [MIM:147060]; also known as hyper-IgE syndrome or Job syndrome. AD-HIES is a rare disorder of immunity and connective tissue characterized by immunodeficiency, chronic eczema, recurrent Staphylococcal infections, increased serum IgE, eosinophilia, distinctive coarse facial appearance, abnormal dentition, hyperextensibility of the joints, and bone fractures. **function:** Transcription factor that binds to the interleukin-6 (IL-6)-responsive elements identified in the promoters of various acute-phase protein genes. Activated by IL31 through IL31RA. **miscellaneous:** Involved in the gp130-mediated signaling pathway. **online information:** STAT3 entry, online information: STAT3 mutation db, **PTM:** Tyrosine phosphorylated in response to IL-6, IL-11, CNTF, LIF, CSF-1, EGF, PDGF, IFN-alpha and OSM. Phosphorylated on serine upon DNA damage, probably by ATM or ATR. Serine phosphorylation is important for the formation of stable DNA-binding STAT3 homodimers and maximal transcriptional activity. **similarity:** Belongs to the transcription factor STAT family. **similarity:** Contains 1 SH2 domain. **subcellular location:** Shuttles between the nucleus and the cytoplasm. Constitutive nuclear presence is independent of tyrosine phosphorylation. **subunit:** Forms a homodimer or a heterodimer with a related family member (at least STAT1). Interacts with NCOA1, PELP1, SOCS7 and STATIP1. Interacts with HCV core protein. Interacts with IL23R in presence of IL23. Interacts with IL31RA. Interacts with SIPAR. Interacts (via SH2 domain) with NLK (By similarity). Interacts with KPNA4 and KPNA5; KPNA4 may be the primary mediator of nuclear import (By similarity). Interacts with TMF1. **tissue specificity:** Heart, brain, placenta, lung, liver, skeletal muscle, kidney and pancreas.

Research Area

Chemokine; Jak_STAT; Adipocytokine; Pathways in cancer; Pancreatic cancer; Acute myeloid leukemia;

Image Data

**Product Name: Phospho-Stat3(Y705)(1E9)Mouse
Monoclonal Antibody
Catalog #: AMM06022**



Immunohistochemical analysis of paraffin-embedded Human Colon Carcinoma Tissue using Muscle Actin Mouse mAb diluted at 1:200.

Note

For research use only.