

Product Name: Phosphoserine(5B12)Mouse Monoclonal Antibody
Catalog #: AMM06003

Summary

Production Name	Phosphoserine(5B12)Mouse Monoclonal Antibody
Description	Mouse Monoclonal Antibody
Host	Mouse
Application	WB,IHC,ELISA
Reactivity	Species independent

Performance

Conjugation	Unconjugated
Modification	Phospho Antibody
Isotype	IgG
Clonality	Monoclonal
Form	Liquid
Storage	Store at 4°C short term. Aliquot and store at -20°C long term. Avoid freeze/thaw cycles.
Buffer	PBS, pH 7.4, containing 0.5%BSA, 0.02% New type preservative N as Preservative and 50% Glycerol.
Purification	Affinity purification

Immunogen

Gene Name	
Alternative Names	
Gene ID	
SwissProt ID	.Purified Protein

Application

Dilution Ratio	WB 1:500 - 1:2000. IHC 1:100 - 1:300. ELISA: 1:40000
Molecular Weight	

Product Name: Phosphoserine(5B12)Mouse Monoclonal Antibody
Catalog #: AMM06003

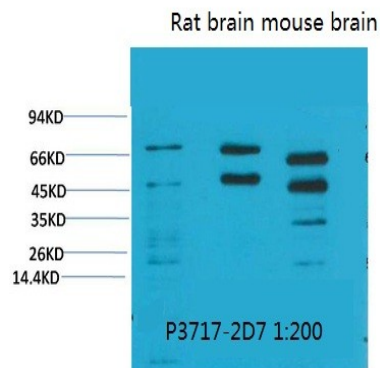


Background

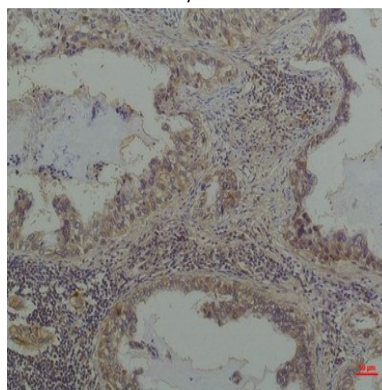
Serine (phosphatidylserine, PS), also known as serine phospholipids, two acyl serine. Phosphate ester compounds in the glycerol phosphate esters, cell membrane group, is one of the important constituents of cell membranes in the brain, especially in the nervous system of the body and also various functions of the brain (especially on the brain's memory and emotional stability) plays important roles, such as it can affects the membrane fluidity and permeability, and can activate the metabolism and synthesis of a variety of enzymes.

Research Area

Image Data

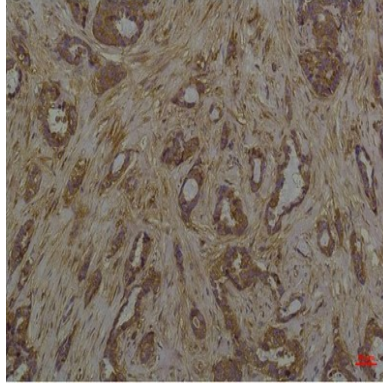


Western blot analysis of 1) Hela, 2) Rat Brain Tissue, 3) Mouse Brain Tissue with Phosphoserine Mouse mAb diluted at 1:2,000.



Immunohistochemical analysis of paraffin-embedded Human Lung Carcinoma using Phosphoserine Mouse mAb diluted at 1:200.

**Product Name: Phosphoserine(5B12)Mouse Monoclonal
Antibody
Catalog #: AMM06003**



Immunohistochemical analysis of paraffin-embedded Human Breast Carcinoma using Phosphoserine Mouse mAb diluted at 1:200.

Note

For research use only.