

**Product Name: phospho-MLKL(S358)(6F8)Mouse
Monoclonal Antibody
Catalog #: AMM05242**

Summary

Production Name	phospho-MLKL(S358)(6F8)Mouse Monoclonal Antibody
Description	Mouse Monoclonal Antibody
Host	Mouse
Application	IHC,
Reactivity	Human

Performance

Conjugation	Unconjugated
Modification	Phospho Antibody
Isotype	IgG
Clonality	Monoclonal
Form	Liquid
Storage	Store at 4°C short term. Aliquot and store at -20°C long term. Avoid freeze/thaw cycles.
Buffer	Liquid in PBS containing 50% glycerol, 0.5% BSA and 0.02% New type preservative N.
Purification	Affinity purification

Immunogen

Gene Name	MLKL
Alternative Names	MLKL
Gene ID	197259.0
SwissProt ID	Q8NB16.Synthetic Peptide of phospho-MLKL (S358)

Application

Dilution Ratio	IHC 1:100-200
Molecular Weight	54kD

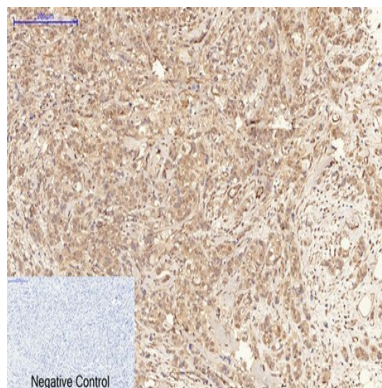
Background

**Product Name: phospho-MLKL(S358)(6F8)Mouse
Monoclonal Antibody
Catalog #: AMM05242**

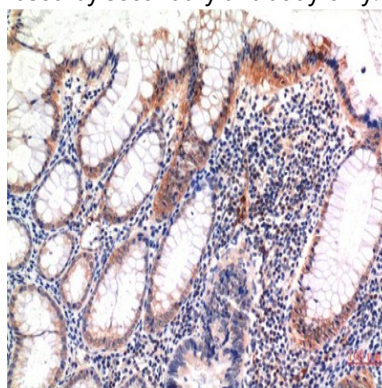
This gene belongs to the protein kinase superfamily. The encoded protein contains a protein kinase-like domain; however, is thought to be inactive because it lacks several residues required for activity. This protein plays a critical role in tumor necrosis factor (TNF)-induced necroptosis, a programmed cell death process, via interaction with receptor-interacting protein 3 (RIP3), which is a key signaling molecule in necroptosis pathway. Inhibitor studies and knockdown of this gene inhibited TNF-induced necrosis. High levels of this protein and RIP3 are associated with inflammatory bowel disease in children. Alternatively spliced transcript variants have been described for this gene. [provided by RefSeq, Sep 2015],domain:The protein kinase domain is predicted to be catalytically inactive.,similarity:Belongs to the protein kinase superfamily.,similarity:Contains 1 protein kinase domain.,

Research Area

Image Data



Immunohistochemical analysis of paraffin-embedded Human-breast-cancer tissue. 1,phospho-MLKL (S358) Mouse Monoclonal Antibody (6F8) was diluted at 1:200 (4°C,overnight) . 2, Sodium citrate pH 6.0 was used for antibody retrieval (>98°C,20min) . 3,Secondary antibody was diluted at 1:200 (room temperature, 30min) . Negative control was used by secondary antibody only.

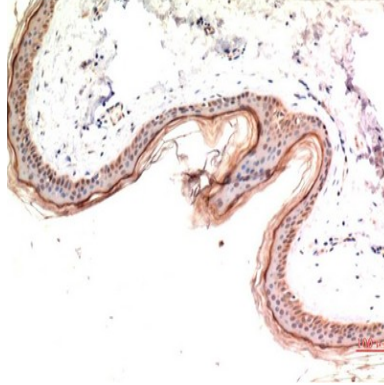


Immunohistochemical analysis of paraffin-embedded Human Colon Carcinoma Tissue using Phospho-MLKL S358 Mouse

**Product Name: phospho-MLKL(S358)(6F8)Mouse
Monoclonal Antibody
Catalog #: AMM05242**



mAb diluted at 1:200.



Immunohistochemical analysis of paraffin-embedded Human Skin Tissue using Phospho-MLKL S358 Mouse mAb diluted at 1:200.

Note

For research use only.