
Summary

Production Name	E2F1 (4G8) Mouse Monoclonal Antibody
Description	Primary antibody
Host	Mouse
Application	WB,ICC/IF,IP
Reactivity	Human,Mouse,Rat

Performance

Conjugation	Unconjugated
Modification	Unmodified
Isotype	IgG2b
Clonality	Monoclonal Antibody
Form	Liquid
Storage	Store at 4°C short term. Aliquot and store at -20°C long term. Avoid freeze/thaw cycles.
Buffer	Liquid in PBS containing 50% glycerol, 0.5% BSA and 0.02% sodium azide, pH 7.3.
Purification	Affinity Purified

Immunogen

Gene Name	E2F1 E2F1; RBBP3; Transcription factor E2F1; E2F-1; PBR3; Retinoblastoma-associated protein 1; RBAP-1; Retinoblastoma-binding protein 3; RBBP-3; pRB-binding protein
Alternative Names	E2F-1
Gene ID	1869
SwissProt ID	Q01094

Application

Dilution Ratio	WB: 1/500-1/1000 IF: 1/50-1/200 IP: 1/20
Molecular Weight	Calculated MW: 47 kDa; Observed MW: 70 kDa

Product Name: E2F1 (4G8) Mouse Monoclonal Antibody
Catalog #: AMM03861



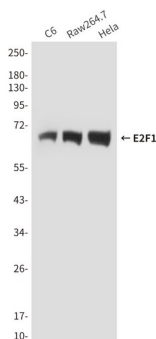
Background

The protein encoded by this gene is a member of the E2F family of transcription factors. The E2F family plays a crucial role in the control of cell cycle and action of tumor suppressor proteins and is also a target of the transforming proteins of small DNA tumor viruses.

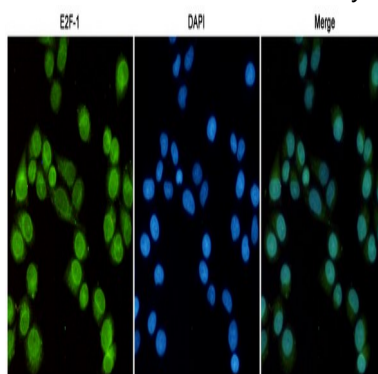
Research Area

Epigenetics and Nuclear Signaling

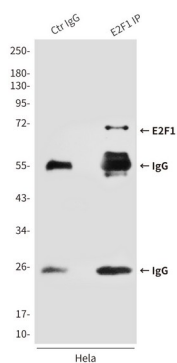
Image Data



Western blot analysis of E2F1 in C6, Raw264.7 and HeLa lysates using E2F1 antibody.



Immunofluorescence analysis of E2F1 (4G8) in HeLa using E2F1 antibody, and DAPI (blue).



Product Name: E2F1 (4G8) Mouse Monoclonal Antibody
Catalog #: AMM03861



Immunoprecipitation analysis of E2F1 (4G8) in Hela lysates using E2F1 antibody.

Note

For research use only.