

**Product Name: Calumenin (4C6) Mouse Monoclonal Antibody**  
**Catalog #: AMM03700**



---

## Summary

<b>Production Name</b>	Calumenin (4C6) Mouse Monoclonal Antibody
<b>Description</b>	Primary antibody
<b>Host</b>	Mouse
<b>Application</b>	WB
<b>Reactivity</b>	Human,Mouse

## Performance

<b>Conjugation</b>	Unconjugated
<b>Modification</b>	Unmodified
<b>Isotype</b>	IgG1
<b>Clonality</b>	Monoclonal Antibody
<b>Form</b>	Liquid
<b>Storage</b>	Store at 4°C short term. Aliquot and store at -20°C long term. Avoid freeze/thaw cycles.
<b>Buffer</b>	Liquid in PBS containing 50% glycerol, 0.5% BSA and 0.02% sodium azide, pH 7.3.
<b>Purification</b>	Affinity Purified

## Immunogen

<b>Gene Name</b>	CALU CALU; CALU_HUMAN; Calumenin 1; Calumenin 2; Calumenin; Crocalbin; crocalbin-like
<b>Alternative Names</b>	protein; FLJ90608; IEF SSP 9302; multiple EF-hand protein; OTTHUMP00000212712; OTTHUMP00000212713; OTTHUMP00000212714; OTTHUMP00000212715.
<b>Gene ID</b>	813
<b>SwissProt ID</b>	O43852

## Application

<b>Dilution Ratio</b>	WB: 1/500-1/1000
<b>Molecular Weight</b>	Calculated MW: 37 kDa; Observed MW: 45 kDa

**Product Name: Calumenin (4C6) Mouse Monoclonal Antibody**  
**Catalog #: AMM03700**



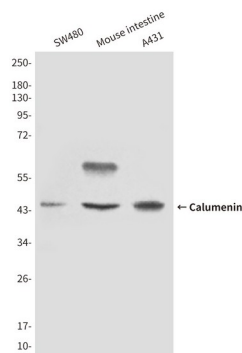
## Background

The product of this gene is a calcium-binding protein localized in the endoplasmic reticulum (ER) and it is involved in such ER functions as protein folding and sorting. This protein belongs to a family of multiple EF-hand proteins (CERC) that include reticulocalbin, ERC-55, and Cab45 and the product of this gene. Alternatively spliced transcript variants encoding different isoforms have been identified. [provided by RefSeq, Oct 2008]

## Research Area

Tags & Cell Markers

## Image Data



Western blot analysis of Calumenin in SW480, mouse intestine and A431 lysates using Calumenin antibody.

## Note

For research use only.