

---

## Summary

<b>Production Name</b>	NSE (1G7) Mouse Monoclonal Antibody
<b>Description</b>	Primary antibody
<b>Host</b>	Mouse
<b>Application</b>	WB,ELISA
<b>Reactivity</b>	Human,Mouse,Rat

## Performance

<b>Conjugation</b>	Unconjugated
<b>Modification</b>	Unmodified
<b>Isotype</b>	IgG1
<b>Clonality</b>	Monoclonal Antibody
<b>Form</b>	Liquid
<b>Storage</b>	Store at 4°C short term. Aliquot and store at -20°C long term. Avoid freeze/thaw cycles.
<b>Buffer</b>	Liquid in PBS containing 50% glycerol, 0.5% BSA and 0.02% sodium azide, pH 7.3.
<b>Purification</b>	Affinity Purified

## Immunogen

<b>Gene Name</b>	ENO2
<b>Alternative Names</b>	ENO2; Gamma-enolase; 2-phospho-D-glycerate hydro-lyase; Enolase 2; Neural enolase; Neuron-specific enolase; NSE
<b>Gene ID</b>	2026
<b>SwissProt ID</b>	P09104

## Application

<b>Dilution Ratio</b>	WB: 1/500-1/1000 ELISA: 1/10000
<b>Molecular Weight</b>	Calculated MW: 47 kDa; Observed MW: 47 kDa

## Background

---

**Product Name: NSE (1G7) Mouse Monoclonal Antibody**  
**Catalog #: AMM03683**

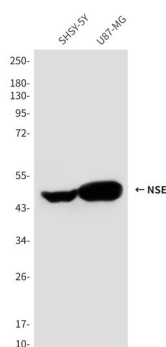


ENO2 an enzyme with 2-phospho-D-glycerate hydro-lyase activity. One of the three enolase isoenzymes found in mammals. This isoenzyme, a homodimer, is found in mature neurons and cells of neuronal origin. A switch from alpha enolase to gamma enolase occurs in neural tissue during development in rats and primates.

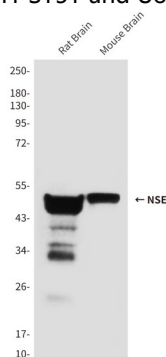
## Research Area

Signal Transduction

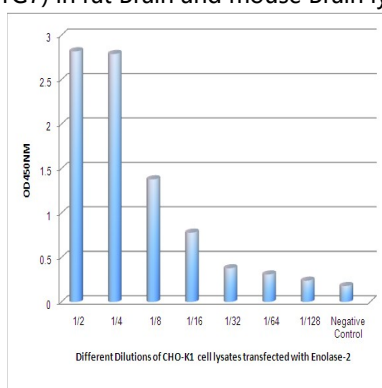
## Image Data



Western blot analysis of Enolase2 in SH-SY5Y and U87-MG lysates using Enolase2 antibody.



Western blot analysis of NSE (1G7) in rat Brain and mouse Brain lysates using Enolase2 antibody.



Observed Enolase2 levels in CHO-K1 cell lysates transfected with Enolase2 at different dilution.

**Product Name: NSE (1G7) Mouse Monoclonal Antibody**  
**Catalog #: AMM03683**



---

**Note**

For research use only.