

**Product Name: DNA PKcs (6D1) Mouse Monoclonal Antibody**  
**Catalog #: AMM03659**



---

## Summary

<b>Production Name</b>	DNA PKcs (6D1) Mouse Monoclonal Antibody
<b>Description</b>	Primary antibody
<b>Host</b>	Mouse
<b>Application</b>	WB,IHC-F,IHC-P,ICC/IF,IP
<b>Reactivity</b>	Human

## Performance

<b>Conjugation</b>	Unconjugated
<b>Modification</b>	Unmodified
<b>Isotype</b>	IgG1
<b>Clonality</b>	Monoclonal Antibody
<b>Form</b>	Liquid
<b>Storage</b>	Store at 4°C short term. Aliquot and store at -20°C long term. Avoid freeze/thaw cycles.
<b>Buffer</b>	Liquid in PBS containing 50% glycerol, 0.5% BSA and 0.02% sodium azide, pH 7.3.
<b>Purification</b>	Affinity Purified

## Immunogen

<b>Gene Name</b>	PRKDC
<b>Alternative Names</b>	PRKDC; HYRC; HYRC1; DNA-dependent protein kinase catalytic subunit; DNA-PK catalytic subunit; DNA-PKcs; DNPk1; p460
<b>Gene ID</b>	5591
<b>SwissProt ID</b>	P78527

## Application

<b>Dilution Ratio</b>	WB: 1/500-1/1000 IHC: 1/50-1/100 IF: 1/50-1/200 IP: 1/20
<b>Molecular Weight</b>	Calculated MW: 469 kDa; Observed MW: 450 kDa

**Product Name: DNA PKcs (6D1) Mouse Monoclonal Antibody**  
**Catalog #: AMM03659**



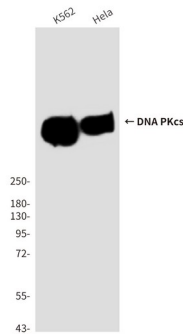
## Background

The PRKDC gene encodes the catalytic subunit of a nuclear DNA-dependent serine/threonine protein kinase (DNA-PK). The second component is the autoimmune antigen Ku (MIM 152690), which is encoded by the G22P1 gene on chromosome 22q. On its own, the catalytic subunit of DNA-PK is inactive and relies on the G22P1 component to direct it to the DNA and trigger its kinase activity; PRKDC must be bound to DNA to express its catalytic properties.

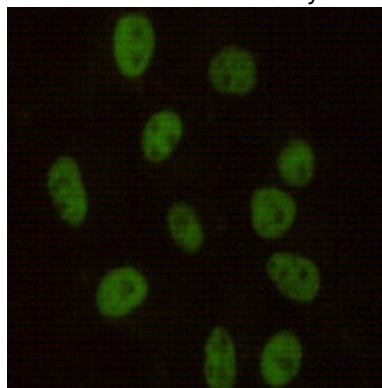
## Research Area

Epigenetics and Nuclear Signaling

## Image Data

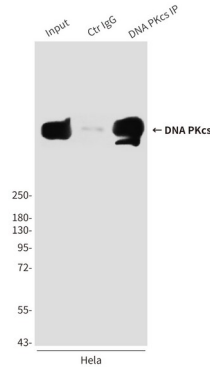


Western blot analysis of DNAPKcs in HeLa and K562 lysates using DNAPKcs antibody.

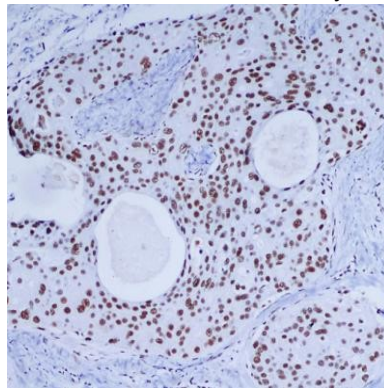


Immunocytochemistry analysis of DNA PKcs (6D1) in HeLa using DNAPKcs antibody.

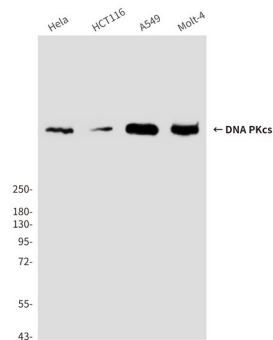
**Product Name: DNA PKcs (6D1) Mouse Monoclonal Antibody**  
**Catalog #: AMM03659**



Immunoprecipitation analysis of DNA PKcs (6D1) in HeLa lysates using DNAPKcs antibody.



Immunohistochemistry analysis of paraffin-embedded Breast cancer using DNAPKcs antibody. High-pressure and temperature Sodium Citrate pH 6.0 was used for antigen retrieval.



Western blot analysis of DNAPKcs in HeLa, Molt4, A549 and HCT116 lysates using DNAPKcs antibody.

## Note

For research use only.