

**Product Name: Human Serum Albumin (1A8) Mouse
Monoclonal Antibody
Catalog #: AMM03645**



Summary

Production Name	Human Serum Albumin (1A8) Mouse Monoclonal Antibody
Description	Primary antibody
Host	Mouse
Application	WB,ELISA
Reactivity	Human

Performance

Conjugation	Unconjugated
Modification	Unmodified
Isotype	IgG1
Clonality	Monoclonal Antibody
Form	Liquid
Storage	Store at 4°C short term. Aliquot and store at -20°C long term. Avoid freeze/thaw cycles.
Buffer	Liquid in PBS containing 50% glycerol, 0.5% BSA and 0.02% sodium azide, pH 7.3.
Purification	Affinity Purified

Immunogen

Gene Name	ALB
Alternative Names	ALB; ALBU_HUMAN; Albumin (32 AA); Albumin (AA 34); Albumin; Analbuminemia; Bisalbuminemia; Cell growth inhibiting protein 42; DKFZp779N1935; Dysalbuminemic hyperthyroxinemia; Growth inhibiting protein 20; HSA; Hyperthyroxinemia dysalbuminemic; Serum albumin.
Gene ID	213
SwissProt ID	P02768

Application

Dilution Ratio	WB: 1/500-1/1000 ELISA: 1/10000
Molecular Weight	Calculated MW: 69 kDa; Observed MW: 69 kDa

**Product Name: Human Serum Albumin (1A8) Mouse
Monoclonal Antibody
Catalog #: AMM03645**



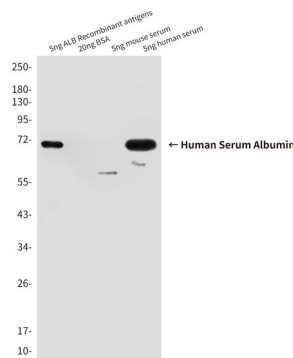
Background

Albumin is a soluble, monomeric protein which comprises about one-half of the blood serum protein. Albumin functions primarily as a carrier protein for steroids, fatty acids, and thyroid hormones and plays a role in stabilizing extracellular fluid volume.

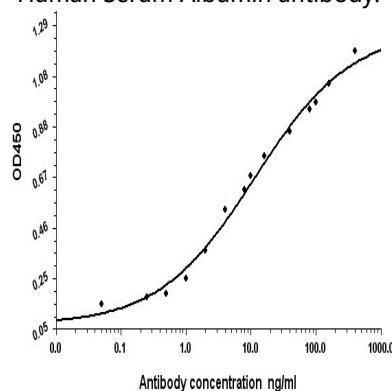
Research Area

Cardiovascular

Image Data

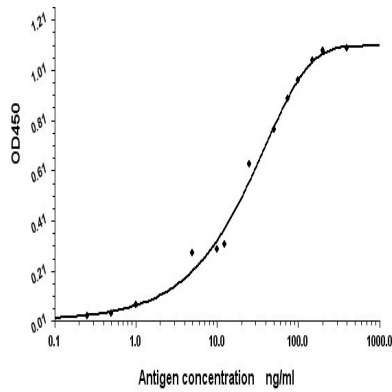


Western blot analysis of Human Serum Albumin in 0.5nl Human serum and 5ng ALB Recombinant antigens lysates using Human Serum Albumin antibody.



Indirect ELISA assay for antiHuman Serum Albumin antibody. Antigen coating concentration: 8ug/ml.

**Product Name: Human Serum Albumin (1A8) Mouse
Monoclonal Antibody
Catalog #: AMM03645**



Standard Curve for Human Serum Albumin (Analyte: Human Serum Albumin protein); using Capture antibody mouse monoclonal [1A8C5B4] to Human Serum Albumin at 8ug/ml and Detector antibody Rabbit polyclonal antiserum to Human Serum Albumin.

Note

For research use only.