

**Product Name: APG5L (8F1) Mouse Monoclonal Antibody**  
**Catalog #: AMM03559**

---

## Summary

<b>Production Name</b>	APG5L (8F1) Mouse Monoclonal Antibody
<b>Description</b>	Primary antibody
<b>Host</b>	Mouse
<b>Application</b>	WB
<b>Reactivity</b>	Human,Mouse,Rat

## Performance

<b>Conjugation</b>	Unconjugated
<b>Modification</b>	Unmodified
<b>Isotype</b>	IgG1
<b>Clonality</b>	Monoclonal Antibody
<b>Form</b>	Liquid
<b>Storage</b>	Store at 4°C short term. Aliquot and store at -20°C long term. Avoid freeze/thaw cycles.
<b>Buffer</b>	Liquid in PBS containing 50% glycerol, 0.5% BSA and 0.02% sodium azide, pH 7.3.
<b>Purification</b>	Affinity Purified

## Immunogen

<b>Gene Name</b>	ATG5
<b>Alternative Names</b>	APG 5L; APG5; APG5 autophagy 5 like; APG5 like; APG5-like; Apoptosis specific protein; ASP; ATG 5; ATG5 autophagy related 5 homolog; Autophagy protein 5; hAPG5
<b>Gene ID</b>	9474
<b>SwissProt ID</b>	Q9H1Y0

## Application

<b>Dilution Ratio</b>	WB: 1/500-1/1000
<b>Molecular Weight</b>	Calculated MW: 32 kDa; Observed MW: 55 kDa

**Product Name: APG5L (8F1) Mouse Monoclonal Antibody**  
**Catalog #: AMM03559**

---

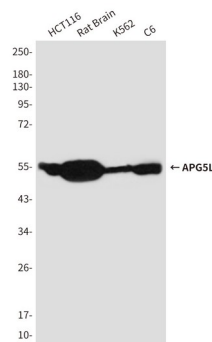
## Background

Required for autophagy. Conjugates to ATG12 and associates with isolation membrane to form cup-shaped isolation membrane and autophagosome. Involved in mitochondrial quality control after oxidative damage, and in subsequent cellular longevity.

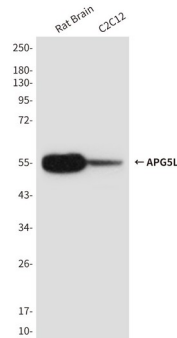
## Research Area

Cell Biology

## Image Data



Western blot analysis of Atg5 in HCT116, rat Brain, K562 and C6 lysates using Atg5 antibody.



Western blot analysis of APG5L (8F1) in rat Brain and C2C12 lysates using Atg5 antibody.

## Note

For research use only.