

**Product Name: Hsp90 alpha/beta (4B6) Mouse  
Monoclonal Antibody  
Catalog #: AMM03517**

---

## Summary

<b>Production Name</b>	Hsp90 alpha/beta (4B6) Mouse Monoclonal Antibody
<b>Description</b>	Primary antibody
<b>Host</b>	Mouse
<b>Application</b>	WB
<b>Reactivity</b>	Human,Mouse,Rat

## Performance

<b>Conjugation</b>	Unconjugated
<b>Modification</b>	Unmodified
<b>Isotype</b>	IgG1
<b>Clonality</b>	Monoclonal Antibody
<b>Form</b>	Liquid
<b>Storage</b>	Store at 4°C short term. Aliquot and store at -20°C long term. Avoid freeze/thaw cycles.
<b>Buffer</b>	Liquid in PBS containing 50% glycerol, 0.5% BSA and 0.02% sodium azide, pH 7.3.
<b>Purification</b>	Affinity Purified

## Immunogen

<b>Gene Name</b>	HSP90AA1/HSP90AB1 HSP90AA1; HSP90A; HSPC1; HSPCA; Heat shock protein HSP 90-alpha; Heat shock 86
<b>Alternative Names</b>	kDa; HSP 86; HSP86; Renal carcinoma antigen NY-REN-38; HSP90AB1; HSP90B; HSPC2; HSPCB; Heat shock protein HSP 90-beta; HSP 90; Heat shock 84 kDa; HSP 84; HSP84
<b>Gene ID</b>	3320/3326
<b>SwissProt ID</b>	P07900/P08238

## Application

<b>Dilution Ratio</b>	WB: 1/500-1/1000
<b>Molecular Weight</b>	Calculated MW: 84 kDa; Observed MW: 90 kDa

**Product Name: Hsp90 alpha/beta (4B6) Mouse  
Monoclonal Antibody  
Catalog #: AMM03517**

---

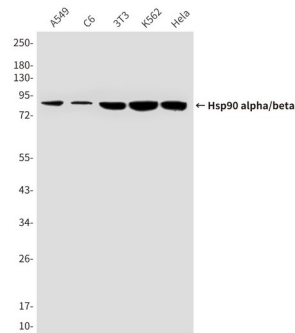
## Background

Molecular chaperone that promotes the maturation, structural maintenance and proper regulation of specific target proteins involved for instance in cell cycle control and signal transduction. Undergoes a functional cycle that is linked to its ATPase activity. This cycle probably induces conformational changes in the client proteins, thereby causing their activation.

## Research Area

Signal Transduction

## Image Data



Western blot analysis of Hsp90 in HeLa, 3T3, C6, K562 and A549 lysates using Hsp90 antibody.

## Note

For research use only.