

**Product Name: Smad2 (6H5) Mouse Monoclonal Antibody**  
**Catalog #: AMM03490**

---

## Summary

<b>Production Name</b>	Smad2 (6H5) Mouse Monoclonal Antibody
<b>Description</b>	Primary antibody
<b>Host</b>	Mouse
<b>Application</b>	WB,ICC/IF
<b>Reactivity</b>	Human,Mouse

## Performance

<b>Conjugation</b>	Unconjugated
<b>Modification</b>	Unmodified
<b>Isotype</b>	IgG1
<b>Clonality</b>	Monoclonal Antibody
<b>Form</b>	Liquid
<b>Storage</b>	Store at 4°C short term. Aliquot and store at -20°C long term. Avoid freeze/thaw cycles.
<b>Buffer</b>	Liquid in PBS containing 50% glycerol, 0.5% BSA and 0.02% sodium azide, pH 7.3.
<b>Purification</b>	Affinity Purified

## Immunogen

<b>Gene Name</b>	SMAD2
<b>Alternative Names</b>	SMAD2; MADH2; MADR2; Mothers against decapentaplegic homolog 2; MAD homolog 2; Mothers against DPP homolog 2; JV18-1; Mad-related protein 2; hMAD-2; SMAD family member 2; SMAD 2; Smad2; hSMAD2
<b>Gene ID</b>	4087
<b>SwissProt ID</b>	Q15796

## Application

<b>Dilution Ratio</b>	WB: 1/500-1/1000 IF: 1/50-1/200
<b>Molecular Weight</b>	Calculated MW: 52 kDa; Observed MW: 60 kDa

**Product Name: Smad2 (6H5) Mouse Monoclonal Antibody**  
**Catalog #: AMM03490**

---

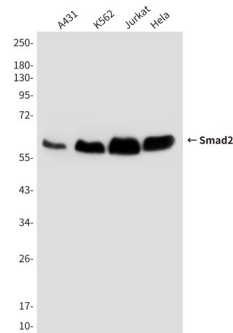
## Background

The protein encoded by this gene belongs to the SMAD, a family of proteins similar to the gene products of the *Drosophila* gene 'mothers against decapentaplegic' (Mad) and the *C. elegans* gene Sma. SMAD proteins are signal transducers and transcriptional modulators that mediate multiple signaling pathways.

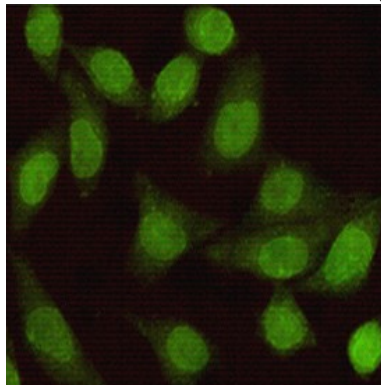
## Research Area

Signal Transduction

## Image Data



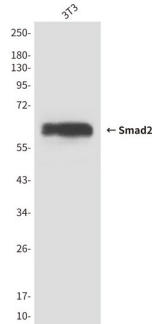
Western blot analysis of Smad2 in HeLa, A431, Jurkat and K562 lysates using Smad2 antibody.



Immunocytochemistry analysis of Smad2 (6H5) in HeLa using Smad2 antibody.

**Product Name: Smad2 (6H5) Mouse Monoclonal Antibody**  
**Catalog #: AMM03490**

---



Western blot analysis of Smad2 (6H5) in 3T3 lysates using Smad2 antibody.

**Note**

For research use only.