

**Product Name: C Reactive Protein (1H3) Mouse  
Monoclonal Antibody  
Catalog #: AMM03329**

---

## Summary

<b>Production Name</b>	C Reactive Protein (1H3) Mouse Monoclonal Antibody
<b>Description</b>	Primary antibody
<b>Host</b>	Mouse
<b>Application</b>	ELISA
<b>Reactivity</b>	Human

## Performance

<b>Conjugation</b>	Unconjugated
<b>Modification</b>	Unmodified
<b>Isotype</b>	IgG1
<b>Clonality</b>	Monoclonal Antibody
<b>Form</b>	Liquid
<b>Storage</b>	Store at 4°C short term. Aliquot and store at -20°C long term. Avoid freeze/thaw cycles.
<b>Buffer</b>	Liquid in PBS containing 50% glycerol, 0.5% BSA and 0.02% sodium azide, pH 7.3.
<b>Purification</b>	Affinity Purified

## Immunogen

<b>Gene Name</b>	CRP
<b>Alternative Names</b>	CRP; PTX1; C-reactive protein
<b>Gene ID</b>	1401
<b>SwissProt ID</b>	P02741

## Application

<b>Dilution Ratio</b>	ELISA: 1/10000
<b>Molecular Weight</b>	-

## Background

---

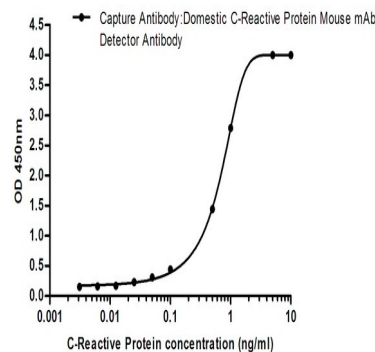
**Product Name: C Reactive Protein (1H3) Mouse  
Monoclonal Antibody  
Catalog #: AMM03329**

Serum CRP values are routinely measured to detect or monitor many human diseases and minor elevations of C-reactive protein are predictive of cardiovascular events in patients with coronary heart disease. CRP promotes host defense, is an efficient activator of the classical C cascade, and shown to be opsonic. The opsonic and C activation activities are responsible for the nonspecific host defense activities providing protection in the preimmune stage of acute infections.

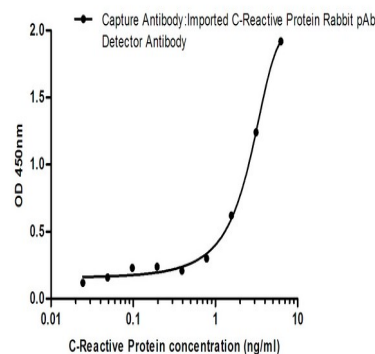
## Research Area

Immunology

## Image Data



sELISA standard Curve for CReactive Protein: Capture Antibody mouse mAb to CReactive Protein at 1ug/ml and 2012781H3 was used for detecting.



sELISA standard Curve for CReactive Protein: Capture Antibody Rabbit pAb to CReactive Protein at 4ug/ml and 2012781H3 was used for detecting.

## Note

For research use only.