

**Product Name: Cystatin C (7F6) Mouse Monoclonal Antibody**  
**Catalog #: AMM03310**



---

## Summary

<b>Production Name</b>	Cystatin C (7F6) Mouse Monoclonal Antibody
<b>Description</b>	Primary antibody
<b>Host</b>	Mouse
<b>Application</b>	ELISA
<b>Reactivity</b>	Human

## Performance

<b>Conjugation</b>	Unconjugated
<b>Modification</b>	Unmodified
<b>Isotype</b>	IgG1
<b>Clonality</b>	Monoclonal Antibody
<b>Form</b>	Liquid
<b>Storage</b>	Store at 4°C short term. Aliquot and store at -20°C long term. Avoid freeze/thaw cycles.
<b>Buffer</b>	Liquid in PBS containing 50% glycerol, 0.5% BSA and 0.02% sodium azide, pH 7.3.
<b>Purification</b>	Affinity Purified

## Immunogen

<b>Gene Name</b>	CST3
<b>Alternative Names</b>	CST3; Cystatin-C; Cystatin-3; Gamma-trace; Neuroendocrine basic polypeptide; Post-gamma-globulin
<b>Gene ID</b>	1471
<b>SwissProt ID</b>	P01034

## Application

<b>Dilution Ratio</b>	ELISA: 1/10000
<b>Molecular Weight</b>	-

**Product Name: Cystatin C (7F6) Mouse Monoclonal Antibody**  
**Catalog #: AMM03310**



---

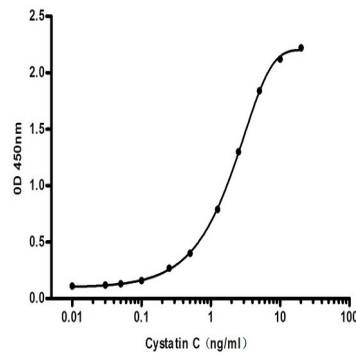
## Background

Cystatin C is a 14 kDa member of the Cystatin superfamily of cysteine protease inhibitors. Most cell types secrete Cystatin C. Cystatin C inhibits cathepsins, and thereby may function as a tumor suppressor by inhibiting cathepsin mediated tumor cell invasion. In addition, this tumor suppressor function can also be attributed to Cystatin C's ability to antagonize TGF- $\beta$ 1 signaling.

## Research Area

Tags & Cell Markers

## Image Data



Standard Curve for Human Cystatin C: Capture Antibody mouse mAb [6F12C7D8] to Human Cystatin C at 4ug/ml and Detector Antibody mouse mAb [7F6A5F3]to Human Cystatin C at 0.5ug/ml.

## Note

For research use only.