

**Product Name: Prealbumin (1F6) Mouse Monoclonal Antibody**  
**Catalog #: AMM00893**



---

## Summary

<b>Production Name</b>	Prealbumin (1F6) Mouse Monoclonal Antibody
<b>Description</b>	Primary antibody
<b>Host</b>	Mouse
<b>Application</b>	WB,IHC-P
<b>Reactivity</b>	Human

## Performance

<b>Conjugation</b>	Unconjugated
<b>Modification</b>	Unmodified
<b>Isotype</b>	IgG1
<b>Clonality</b>	Monoclonal Antibody
<b>Form</b>	Liquid
<b>Storage</b>	Store at 4°C short term. Aliquot and store at -20°C long term. Avoid freeze/thaw cycles.
<b>Buffer</b>	Liquid in PBS containing 50% glycerol, 0.5% BSA and 0.02% sodium azide, pH 7.3.
<b>Purification</b>	Affinity Purified

## Immunogen

<b>Gene Name</b>	TTR
<b>Alternative Names</b>	Prealbumin; TBPA; Amyloidosis I; Transthyretin
<b>Gene ID</b>	7276
<b>SwissProt ID</b>	P02766

## Application

<b>Dilution Ratio</b>	WB: 1/500-1/1000 IHC: 1/50-1/100
<b>Molecular Weight</b>	Calculated MW: 16 kDa; Observed MW: 16 kDa

## Background

---

**Product Name: Prealbumin (1F6) Mouse Monoclonal Antibody**  
**Catalog #: AMM00893**

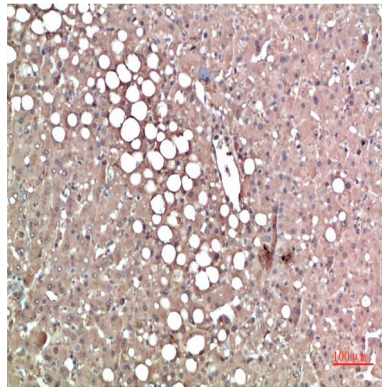


Thyroid hormone-binding protein. Probably transports thyroxine from the bloodstream to the brain.

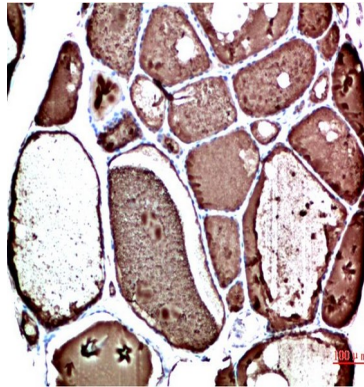
## Research Area

Neuroscience

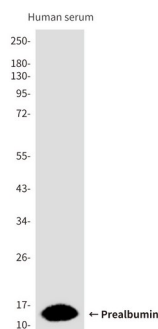
## Image Data



Immunohistochemistry analysis of paraffin-embedded Human Liver Carcinoma Tissue using Prealbumin (1F6) antibody. High-pressure and temperature Sodium Citrate pH 6.0 was used for antigen retrieval.



Immunohistochemical analysis of paraffin-embedded Human tonsils using Prealbumin (1F6) antibody. High-pressure and temperature Sodium Citrate pH 6.0 was used for antigen retrieval.



**Product Name: Prealbumin (1F6) Mouse Monoclonal  
Antibody**  
**Catalog #: AMM00893**



---

Western blot analysis of Prealbumin (1F6) in Hela, Jurkat, mouse brain, MOLT4, Human serum lysates using Prealbumin (1F6) antibody

**Note**

For research use only.