

Product Name: Rabbit IgG Fc (6D3) Mouse Monoclonal Antibody
Catalog #: AMM00875



Summary

Production Name	Rabbit IgG Fc (6D3) Mouse Monoclonal Antibody
Description	Primary antibody
Host	Mouse
Application	WB
Reactivity	Rabbit

Performance

Conjugation	Unconjugated
Modification	Unmodified
Isotype	IgG1
Clonality	Monoclonal Antibody
Form	Liquid
Storage	Store at 4°C short term. Aliquot and store at -20°C long term. Avoid freeze/thaw cycles.
Buffer	Liquid in PBS containing 50% glycerol, 0.5% BSA and 0.02% sodium azide, pH 7.3.
Purification	Affinity Purified

Immunogen

Gene Name	Rabbit IgG
Alternative Names	Antibody; Ig gamma chain C region; Ig kappa-b4 chain C region; Ig kappa-b5 chain C region; Ig kappa-b9 chain C region; Ig lambda chain C region; K-BAS.
Gene ID	-
SwissProt ID	-

Application

Dilution Ratio	WB: 1/500-1/1000
Molecular Weight	Calculated MW: 55 kDa; Observed MW: 55 kDa

Product Name: Rabbit IgG Fc (6D3) Mouse Monoclonal Antibody
Catalog #: AMM00875



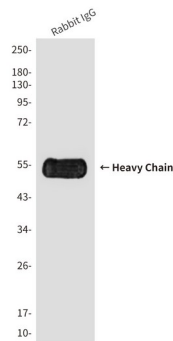
Background

Constant region of immunoglobulin heavy chains. Immunoglobulins, also known as antibodies, are membrane-bound or secreted glycoproteins produced by B lymphocytes.

Research Area

Immunology

Image Data



Western blot analysis of Reduced Rabbit IgG, H+L using Rabbit IgG Fc (6D3) antibody.

Note

For research use only.