

Summary

Production Name	PHC1 (8G5) Mouse Monoclonal Antibody
Description	Primary antibody
Host	Mouse
Application	FC
Reactivity	Human

Performance

Conjugation	Unconjugated
Modification	Unmodified
Isotype	IgG1
Clonality	Monoclonal Antibody
Form	Liquid
Storage	Store at 4°C short term. Aliquot and store at -20°C long term. Avoid freeze/thaw cycles.
Buffer	Liquid in PBS containing 50% glycerol, 0.5% BSA and 0.02% sodium azide, pH 7.3.
Purification	Affinity Purified

Immunogen

Gene Name	PHC1
Alternative Names	EDR1; HPH1; RAE28
Gene ID	1911
SwissProt ID	P78364

Application

Dilution Ratio	FC: 1/100
Molecular Weight	-

Background

This gene is a homolog of the Drosophila polyhomeotic gene, which is a member of the Polycomb group of genes. The

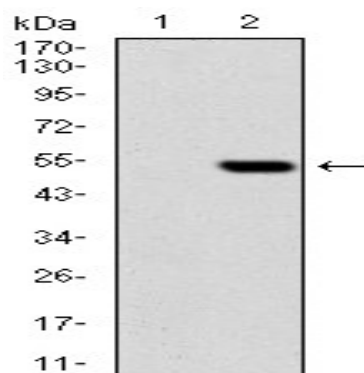
Product Name: PHC1 (8G5) Mouse Monoclonal Antibody
Catalog #: AMM00854

gene product is a component of a multimeric protein complex that contains EDR2 and the vertebrate Polycomb protein BMH1. The gene product, the EDR2 protein, and the Drosophila polyhomeotic protein share 2 highly conserved domains, named homology domains I and II. These domains are involved in protein-protein interactions and may mediate heterodimerization of the protein encoded by this gene and the EDR2 protein.

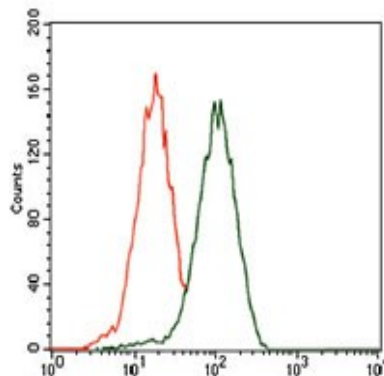
Research Area

Epigenetics and Nuclear Signaling

Image Data



Western blot analysis of HEK293 (1) and PHC1 (AA: 7581004)hlgGfc transfected HEK293 (2) lysates using PHC1 antibody.



Flow cytometry analysis of HEK293 stained with PHC1 antibody (green) and negative control (red).

Note

For research use only.