
Summary

| | |
|------------------------|--------------------------------------|
| Production Name | LC3B (8H6) Mouse Monoclonal Antibody |
| Description | Primary antibody |
| Host | Mouse |
| Application | IHC-P |
| Reactivity | Human |

Performance

| | |
|---------------------|--|
| Conjugation | Unconjugated |
| Modification | Unmodified |
| Isotype | IgG1 |
| Clonality | Monoclonal Antibody |
| Form | Liquid |
| Storage | Store at 4°C short term. Aliquot and store at -20°C long term. Avoid freeze/thaw cycles. |
| Buffer | Liquid in PBS containing 50% glycerol, 0.5% BSA and 0.02% sodium azide, pH 7.3. |
| Purification | Affinity Purified |

Immunogen

| | |
|--------------------------|----------|
| Gene Name | MAP1LC3B |
| Alternative Names | MAP1LC3B |
| Gene ID | 81631 |
| SwissProt ID | Q9GZQ8 |

Application

| | |
|-------------------------|-----------------|
| Dilution Ratio | IHC: 1/50-1/100 |
| Molecular Weight | - |

Background

Ubiquitin-like modifier involved in formation of autophagosomal vacuoles (autophagosomes). Plays a role in mitophagy

Product Name: LC3B (8H6) Mouse Monoclonal Antibody
Catalog #: AMM00751

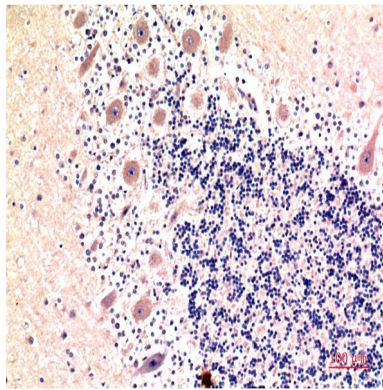


which contributes to regulate mitochondrial quantity and quality by eliminating the mitochondria to a basal level to fulfill cellular energy requirements and preventing excess ROS production.

Research Area

Signal Transduction

Image Data



Immunohistochemistry analysis of paraffin-embedded Human Brain Tissue using LC3B (8H6) antibody. High-pressure and temperature Sodium Citrate pH 6.0 was used for antigen retrieval.

Note

For research use only.